

CRUISING SAILING YACHT

 TAYANA 37



DESIGNED BY ROBERT PERRY



TAYANA 37

CUTTER • KETCH • PILOT HOUSE



SIMPLY THE FINEST OFFSHORE SAILING YACHT AVAILABLE-EASILY
HANDLED BY A COUPLE, POWERFUL ENOUGH TO CROSS OCEANS,
COMFORTABLE ENOUGH TO LIVE ABOARD, BEAUTIFUL ENOUGH TO
BRING TEARS TO YOUR EYES.

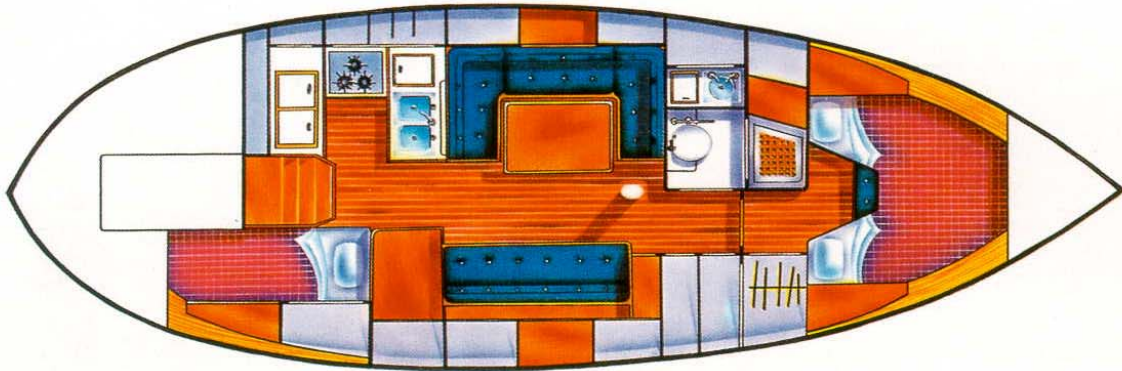
TA-YANG DOESN'T JUST PROMISE-THEY DELIVER



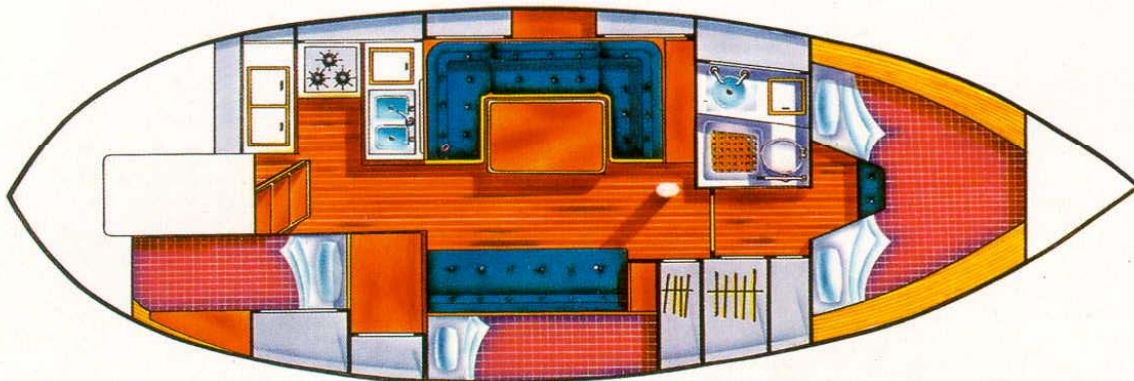
TAYANA 37

Tayana interiors are justly famous throughout the world. They feature the finest tropical hardwoods and are built to the very highest standards. In fact, Ta Yang is the industry apotheosis for fine joinery. Once one has seen a Tayana interior, everything else tends to look common.

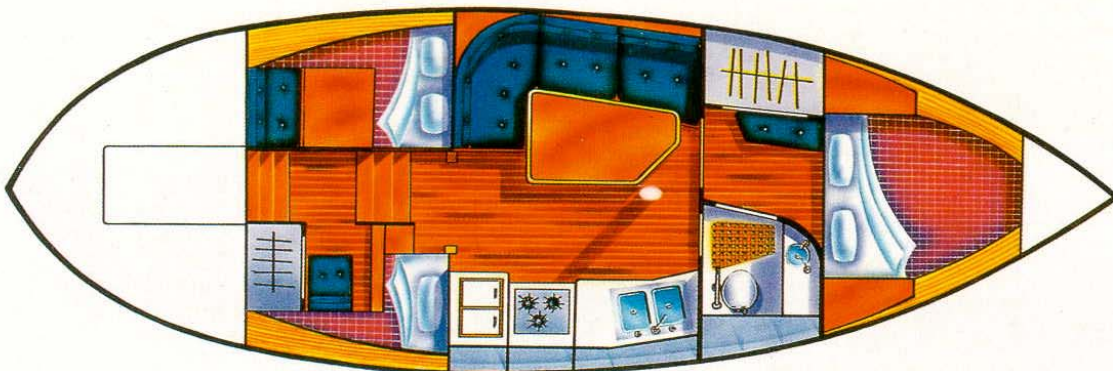
CUTTER



KETCH



PILOT HOUSE



CUSTOM INTERIORS
ARE AVAILABLE AND CAN BE CONSTRUCTED TO SUIT INDIVIDUAL REQUIREMENTS.



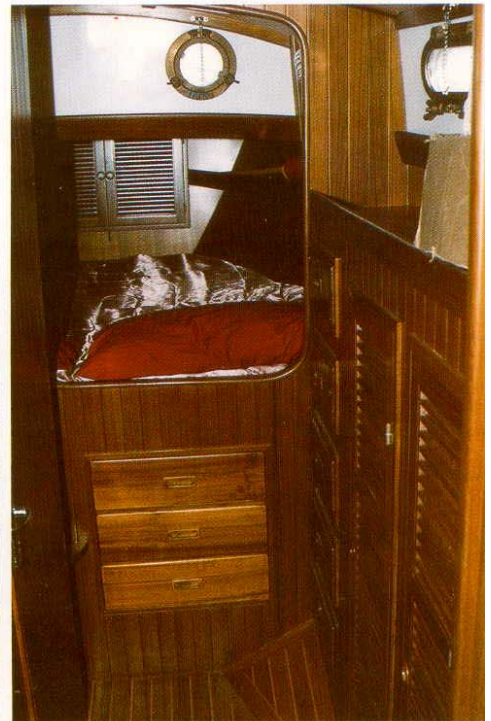
TAYANA 37

CUTTER • KETCH • PILOT HOUSE STANDARD EQUIPMENT LIST

- Hand layed up fiberglass reinforced plastic (FRP) hull and deck.
- Teak hatches, companion, sampson posts, handrails, rubrail.
- Laminated bowsprit with teak platform and anchor rollers.
- Chainlocker and deckpipe.
- Bow and stern pulpits with double lifelines and gates port and starboard.
- Four dorade vents
- FRP seahood
- Seven winches and winch handles. (Eight with Ketch)
- Diesel engine by Yanmar 4JH2E 50HP.
- Pedestal steering with teak emergency tiller.
- Aluminum spars with stainless steel standing rigging and dacron running rigging.
- Main, jib and staysail working sails with bags and sail covers.
- Interior joinery and cabinetry is teak with all lockers insulated and formica on working surface.
- Heads include toilet, bowl, shower, mirror, and teak cabinetry.



- *Electrical system, DC, includes on 120 AH battery, eight 12volt cabin lights, six reading lights, international running lights, deck light, anchor light, 12 volt outlets.*
- *Electrical system, AC, includes 110 volt 30 amp shore power plug, 110 volt outlets throughout, hot water heater.*
- *AC and DC electrical panel with AC/DC volt meters, AC/DC ammeters and AC/DC circuit breakers.*
- *90 gal fuel tank, black iron*
- *100 gal water tank, stainless steel*
- *Hot & Cold pressure water*
- *Manual and electric bilge pumps*
- *Bronze seacocks*
- *and much, much more*



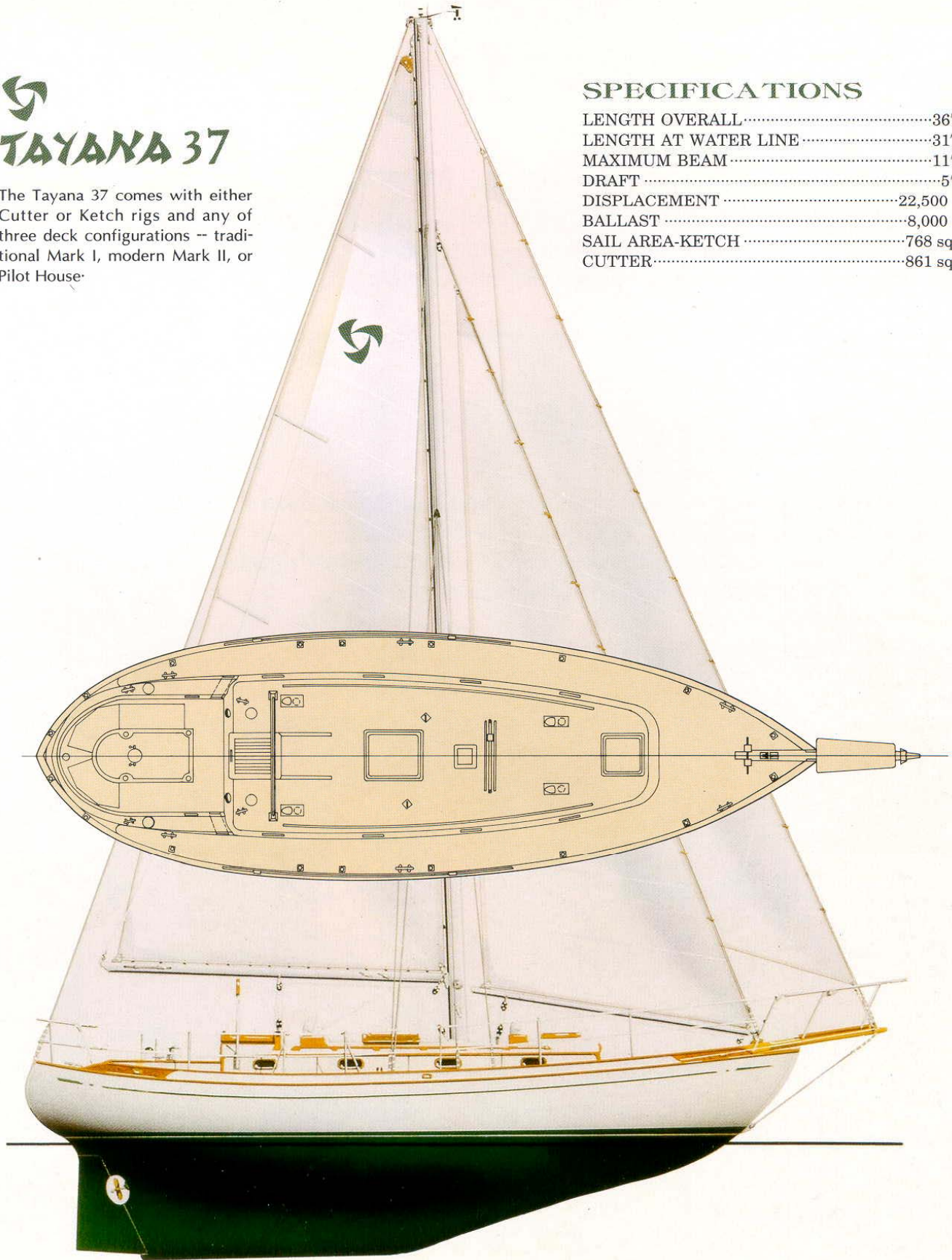


TAYANA 37

The Tayana 37 comes with either Cutter or Ketch rigs and any of three deck configurations -- traditional Mark I, modern Mark II, or Pilot House.

SPECIFICATIONS

LENGTH OVERALL.....	36'-8"
LENGTH AT WATER LINE.....	31'-0"
MAXIMUM BEAM.....	11'-6"
DRAFT.....	5'-8"
DISPLACEMENT.....	22,500 lbs
BALLAST.....	8,000 lbs
SAIL AREA-KETCH.....	768 sq. ft
CUTTER.....	861 sq. ft



BUILDER:

TA YANG YACHT BUILDING CO., LTD.

60, Hai Chien Road, Chung Men Village,
Lin Yuan, Kaohsiung Hsien, Taiwan, R.O.C.

TEL:(07)6412721/4 • 6412422

FAX:(07)642-3193 • 222-9781

DEALER:

Cabrillo Yacht Sales, Inc.
Tayana Importer / Dealer
(619) 523-1745
www.cabrilloyachts.com